



AMORE™

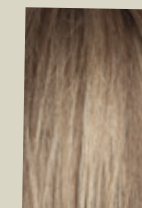
COLLECTION 2022

AMORE™

COLLECTION 2022



BREATHE NEW LIFE INTO YOUR LOOK...



Make a statement with our newest styles and color: Tate, Braylen, Levy, Sybil, and our newest color Cashmere Brown-SR. This new color features a natural softer root.

Discover comfort and beauty in the newest Advanced Lace Cap. This cap features a hand-tied + double monofilament cap construction along with an extended lace front. Available in Sybil.

Styles shown (left to right):
Levy in Simply White,
Tate in Auburn Sugar,
Braylen in Nutmeg-R,
Sybil in Marble Brown



INDEX

NEW AMORE™ STYLES



BRAYLEN 2581 PAGE 8



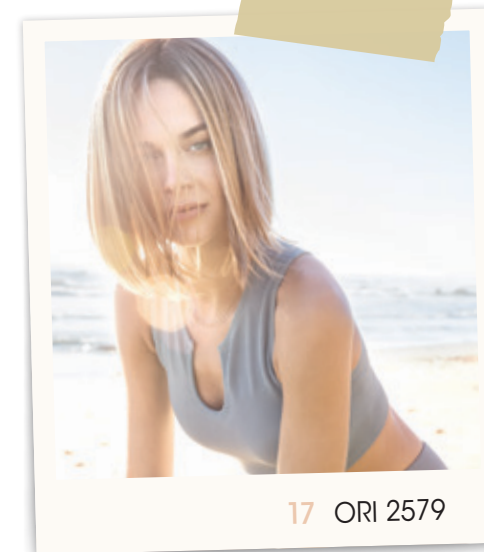
LEVY 2582 PAGE 10



SYBIL 2583 PAGE 12



TATE 2580 PAGE 14



17 ORI 2579

6 AVAILABLE COLORS

16 AMORE™ XO PLUS COLLECTION

- 16 KAYLA 2575
- 17 ORI 2579
- 18 REED 2577
- 19 ROYCE 2578
- 20 SHAY 2574

21 AMORE™ XO COLLECTION

- 21 CODI XO 2563

22 AMORE™ COLLECTION

- 22 BRANDI 2503
- 23 BRITTANY 2538
- 24 CASEY 2572
- 25 CODI 2543
- 26 CONNIE 2535
- 26 DIXIE 2521
- 27 EMY 2576
- 28 ERIKA 2532
- 28 ERIN 2513
- 29 EVANNA MONO 2568
- 30 HAYDEN 2573
- 31 SAMANTHA 2514

- 31 STEVIE 2516
- 32 TATUM 2548
- 32 TOVA 2540
- 33 VADA 2569

34 HALO COLLECTION

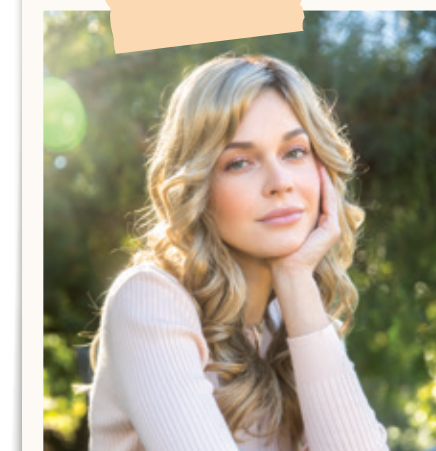
- 34 LONG HALO 737
- 35 WAVY BOB HALO 738
- 36 HALO BOB 736
- 36 ROP HALO 733

37 REMY HUMAN HAIR TOPPERS

- 37 DIAMOND TOPPER 8706
- 38 MINI TOPPER 8707

39 HAIR ENHANCEMENT

- 39 FLEX TP 912
- 40 LUXE TP 911
- 41 MEDIUM TP MONO 751
- 41 LONG TP MONO 752
- 41 FRINGE FLAIR 759

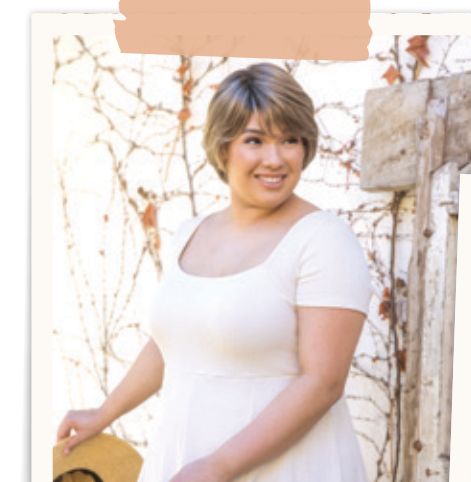


40 LUXE TP 911

42 AMORE™ CHILDREN'S COLLECTION

- 42 ADDISON 4208
- 43 ELSIE 4209
- 43 KENSLEY 4207
- 44 LOGAN 4205
- 44 MILEY 4206

45 ACCESSORIES

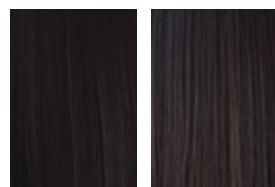


24 CASEY 2572



27 EMY 2576

AMORE™ REMY HUMAN HAIR*



Espresso Dark Chocolate



Cappuccino Toffee Brown



Brown Spice Honey Brown



Moonlight Blonde Root Moonlight Blond-LR



Starlight Blonde Golden Wheat

BRUNETTES



Espresso Cappuccino Dark Chocolate Coffee Latte-R



Mocha Brown Coffee Latte Java Frost Almond Rocka-R



Ginger Brown Toasted Brown Kahlua Blast Marble Brown-R



Medium Brown Caramel Brown Chocolate Frost Iced Mocha-R



Iced Mocha Light Chocolate Golden Brown Maple Sugar-R



Almond Rocka Marble Brown Maple Sugar Honey Brown-R

BLONDS



Honey Wheat Mochaccino Mochaccino-R



Butter Pecan Harvest Gold Spring Honey-R



Creamy Toffee Strawberry Swirl Creamy Toffee-R



Spring Honey/Spring Honey-T Frosti Blond Champagne-R



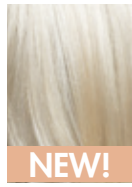
Ice Blond Vanilla Lush Rose Gold-R



Gold Blond Sugar Cane Sugar Cane-R

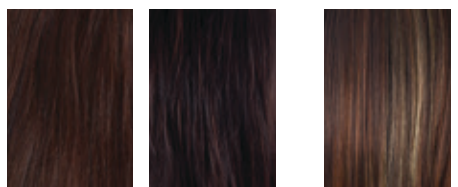


Creamy Blond Platinum Pearl Nutmeg-R/F

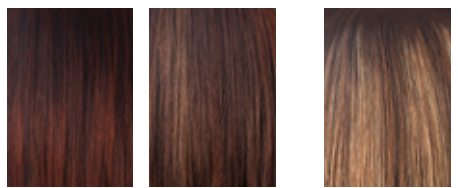


NEW! Seashell Blond-R

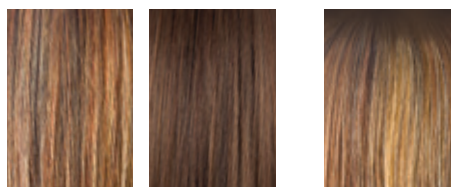
REDS



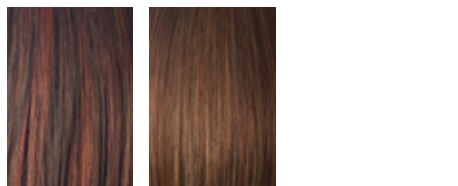
Mulberry Brown Burgundy Raspberry Ice-R



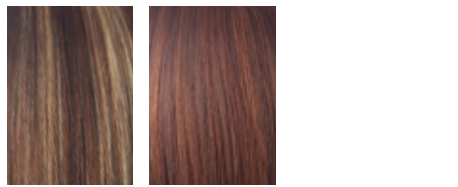
Burgundy Rosa Garnet Glaze Auburn Sugar-R



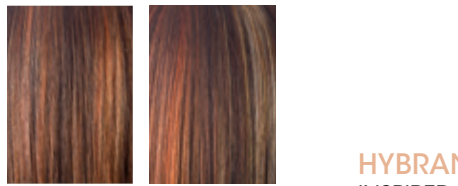
Dark Rust Bronzed Brown Cooper Glaze-R



Cayenne Spice Rusty Red



Auburn Sugar Chestnut



Ginger Highlight Raspberry Ice

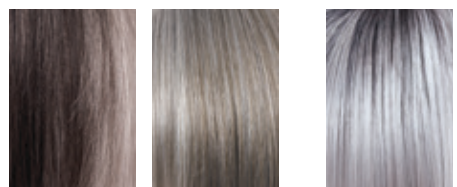


Irish Spice Copper Glaze



Coconut Spice Apricot Frost

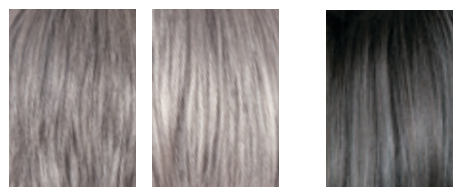
GRAYS



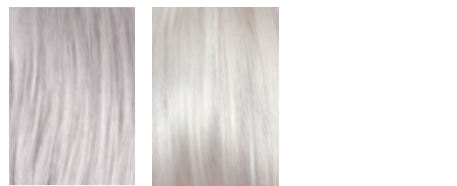
Midnight Pearl Sandy Silver™ Illumina-R



Silver Stone™ 39 Silver Stone-R



51 56 Smoky Gray-R

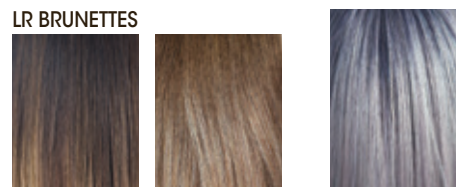


Silver Mink 60

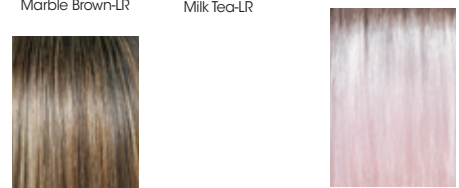


Simply White

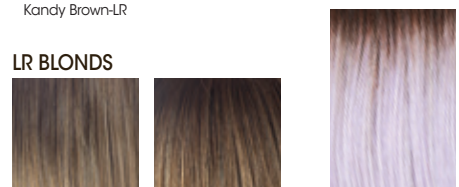
LONG ROOTED COLORS



LR BRUNETTES Marble Brown-LR Milk Tea-LR



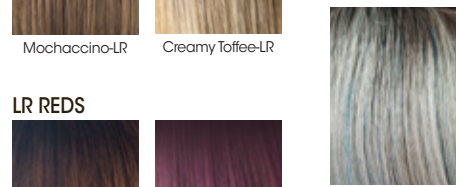
Kandy Brown-LR



LR BLONDES Banana Split-LR Macadamia-LR



Mochaccino-LR Creamy Toffee-LR



LR REDS Crimson-LR Plumberry Jam-LR

PASTELS



Pastel Blue-R



Bubblegum-R



Lavender Blush-R

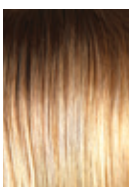


Seaglass-R



Snowy Sapphire-R

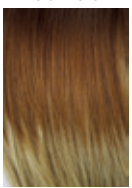
MELTED BLENDS



Melted Sunset



Melted Marshmallow



Melted Coconut

SOFT ROOTED COLOR



NEW! Cashmere Brown-SR

HYBRANT UNDERLIGHTS



Honeycomb Brown

HYBRANT ROOT

INSPIRED by the resplendence of nature and skillfully crafted by artisans, René of Paris proudly offers new designs and Hybrant Root™ Colors to this collection. This vibrant exploration of color chemistry pairs softly shadowed roots with Hybrant Shades™ to create the Ultimate Wig Experience just for you.

AMORE™ REMY HUMAN HAIR*

Our remy human hair toppers are available in 8 beautiful and multi-dimensional colors.

*May contain trace amounts of other hair fibers.

MELTED BLENDS

Our dazzling gradient tones. Modern, natural salon-like finish. Available in 3 contemporary colors.

LONG ROOTED COLORS

Offers a dramatic ombré style root with a gradual lightening toward the ends.

SOFT ROOT

Offers a lighter root for a softer natural look.

AMORE™
AVAILABLE COLORS

SPECIAL ORDERS: If you don't see a favorite style in this catalog or if you want a style designed in a different color, just contact your AHG sales consultant and ask about placing a "special order." We will do our very best to accommodate your requests! **1.800.353.7363**

NEW

BRAYLEN

2581

A beautiful mid length style with a beach wave/ curl pattern. Braylen has a fuller fringe and a side part, both playful and fun, this medium density style is gorgeous.

Cap Construction:
Lace front + double monofilament
Fringe: 4.3" (11cm)
Crown: 7.9" (20cm)
Nape: 4.7" (12cm)
Weight: 3.7oz (105g)

Colors Shown (left to right):
Cashmere Brown-SR **NEW!**
Ginger Brown
Ice Blond

Available Colors:
Brunettes:
Chocolate Frost
Coffee Latte
Dark Chocolate
Ginger Brown
Maple Sugar
Medium Brown

Hybrant Brunettes:
Iced Mocha-R
Marble Brown-R

LR Brunettes:
Kandy Brown-LR

Blonds:
Spring Honey-T
Ice Blond

Hybrant Blonds:
Champagne-R
Creamy Toffee-R
Mochaccino-R
Nutmeg-R
Rose Gold-R
Sugar Cane-R

Reds:
Auburn Sugar

Melted:
Melted Marshmallow

Grays:
Silver Stone™

Soft Root:
Cashmere Brown-SR **NEW!**



NEW

LEVY 2582

A mid-length layered style with a fuller fringe and a bouncy salon-inspired way texture that rests on the shoulders.

Cap Construction:
Double monofilament
Fringe: 5.1" (13cm)
Crown: 8.3" (21cm)
Nape: 7.9" (20cm)
Weight: 3.9oz (111g)

Colors Shown (left to right):
Iced Mocha-R
Seashell Blond-R **NEW!**
Kandy Brown-LR

Available Colors:
Brunettes:
Chocolate Frost
Coffee Latte
Dark Chocolate
Ginger Brown
Maple Sugar
Medium Brown

Hybrant Brunettes:
Iced Mocha-R
Marble Brown-R

LR Brunettes:
Kandy Brown-LR

Blonds:
Spring Honey-T

Hybrant Blonds:
Champagne-R
Creamy Toffee-R
Mochaccino-R
Nutmeg-R
Rose Gold-R
Sugar Cane-R
Seashell Blond-R **NEW!**

Reds:
Auburn Sugar

Melted:
Melted Marshmallow

Grays:
Silver Stone™
Simply White

Soft Root:
Cashmere Brown-SR **NEW!**





NEW

SYBIL 2583

A sophisticated long layered bob, this lovely new style has shape enhancing layers and a long side fringe that highlights the cheek bones.

Cap Construction:
Extended lace front + double monofilament + handtied
Fringe: 7.5" (19cm)
Crown: 8.3" (21cm)
Nape: 4.9" (12.5cm)
Weight: 2.7-2.9oz (76-81g)

Colors Shown (clockwise):
Marble Brown
Cashmere Brown-SR **NEW!**
Silver Stone™

Available Colors:
Brunettes:
Chocolate Frost
Coffee Latte
Dark Chocolate
Ginger Brown
Maple Sugar
Medium Brown
Marble Brown

Hybrant Brunettes:
Iced Mocha-R

LR Brunettes:
Kandy Brown-LR

Blonds:
Spring Honey-T
Creamy Blond
Creamy Toffee

Hybrant Blonds:
Champagne-R
Mochaccino-R
Rose Gold-R
Sugar Cane-R

Reds:
Auburn Sugar

Meltd:
Meltd Marshmallow

Grays:
Silver Stone™
Simply White

Soft Root:
Cashmere Brown-SR **NEW!**



NEW

TATE 2580

Tate has soft layers that create body and shape with a soft fringe that accentuate the eyes.

Cap Construction:
Lace front + double monofilament
Hand-tied
Fringe: 5.3" (13.5cm)
Crown: 6.3" (16cm)
Nape: 3.1" (8cm)
Weight: 2.6-3.0oz (78-84g)

Colors Shown (clockwise):
Silver Stone-R
Spring Honey-T
Auburn Sugar

Available Colors:
Brunettes:
Chocolate Frost
Coffee Latte
Dark Chocolate
Ginger Brown
Maple Sugar
Medium Brown

Hybrant Brunettes:
Iced Mocha-R
Marble Brown-R

LR Brunettes:
Kandy Brown-LR

Blonds:
Spring Honey-T

Hybrant Blonds:
Champagne-R
Creamy Toffee-R
Mochaccino-R
Nutmeg-R
Rose Gold-R
Sugar Cane-R

Reds:
Auburn Sugar

Meltd:
Meltd Marshmallow

Grays:
Silver Stone™
Simply White

Hybrant Grays:
Silver Stone-R

Soft Root:
Cashmere Brown-SR **NEW!**

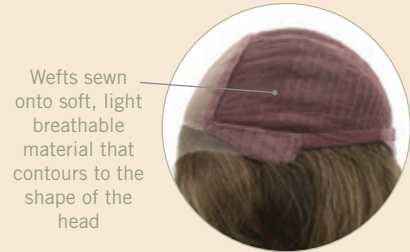


XO PLUS COLLECTION

Amore™ XO PLUS features the same XO quality in a lighter cap with airy single monofilament for maximum comfort and breathability.



Airy single monofilament with temple-to-temple lace front



Wefts sewn onto soft, light breathable material that contours to the shape of the head

KAYLA

2575

Gorgeous textured hair now available in a soft & light net cap

Cap Construction:
Lace front + monofilament + soft net
Fringe: 14" (36 cm)
Crown: 14" (36 cm)
Nape: 14" (36 cm)
Weight: 4.7 oz (132 g)

Color Shown:
Mocha Brown

Available Colors:
Brunettes:
Caramel Brown

Dark Chocolate
Mocha Brown

Blonds:
Ice Blond
Marble Brown-LR
Melted Marshmallow

Hybrant Blonds:
Creamy Toffee-LR
Mochaccino-LR
Rose Gold-R
Spring Honey-R



ORI

2579

All-around favorite blunt cut bob. Natural density monofilament top and lace front make it realistic and lively.



Cap Construction:
Lace front + monofilament + soft net
Fringe: 10.5" (26.7cm)
Crown: 12" (30.5cm)
Nape: 2.25" (5.7cm)
Weight: 4.0oz (113g)

Colors Shown:
Nutmeg-R
Milk Tea-LR (bottom inset)

Available Colors:
Brunettes:
Dark Chocolate
Ginger Brown
Medium Brown

Hybrant Brunettes:
Marble Brown-R

LR Brunettes:
Milk Tea-LR

Blonds:
Ice Blond

Hybrant Blonds:
Champagne-R
Creamy Toffee-R
Nutmeg-R
Rose Gold-R
Mochaccino-R

Melted:
Melted Marshmallow



Cap Construction:
Lace front + monofilament
+ soft net
Fringe: 7" (17.8cm)
Crown: 9" (23cm)
Nape: 10.5" (26.7cm)
Weight: 4.13oz (117g)

Colors Shown:
Melted Coconut (top)
Ice Blond (bottom)

Available Colors:
Brunettes:
Dark Chocolate
Ginger Brown
Medium Brown

Hybrant Brunettes:
Marble Brown-R

LR Brunettes:
Milk Tea-LR
Marble Brown-LR

Blonds:
Ice Blond

Hybrant Blonds:
Champagne-R
Rose Gold-R
Spring Honey-R

LR Blonds:
Creamy Toffee-LR
Mochaccino-LR

LR Reds:
Plumberry Jam-LR

Pastels:
Snowy Sapphire-R

Melted:
Melted Coconut
Melted Marshmallow



ROYCE 2578

Soft and wavy long layers
with a side swept fringe.
This stunning design has
numerous styling options.

Cap Construction:
Lace front + monofilament +
soft net
Fringe: 4.5-6.5" (11.4-16.5cm)
Crown: 10" (25.4cm)
Nape: 16" (40.6cm)
Weight: 4.8oz (137g)

Colors Shown:
Rose Gold-R (main, left inset)
Melted Coconut (right inset)

Available Colors:
Brunettes:
Medium Brown
Dark Chocolate
Ginger Brown

LR Brunettes:
Milk Tea-LR
Marble Brown-LR

Hybrant Blonds:
Champagne-R
Rose Gold-R
Spring Honey-R

Blonds:
Ice Blond

LR Blonds:
Creamy Toffee-LR
Mochaccino-LR

LR Reds:
Plumberry Jam-LR

Melted:
Melted Coconut
Melted Marshmallow

Pastels:
Snowy Sapphire-R

REED 2577

Medium length, feathery
layers and soft body are
combined to create nice
movement from top to
bottom.



SHAY

2574

Timeless and effortless short bob is now available in a soft & light net cap



XO COLLECTION

Amore quality construction with the addition of soft fabric covered wefting for ultimate comfort.

100% hand-tied for multi-directional styling

Hairline fusion technology with minimal lace front for natural look

Double-layered monofilament top for soft contact

Wefts sewn onto soft, breathable material that contours to the shape of the head

Non-slip silicone ear tabs for secure fit

Adjustable bands for custom fit

Adjustable bands for custom fit

Non-slip silicone on nape for secure fit



CODI XO

2563

An angled bob with side swept fringe creates a simply beautiful look.

Fringe: 5.7" (14.5 cm)
Crown: 7.9" (20 cm)
Nape: 1.8" (4.5 cm)
Weight: 3.0 oz (85 g)

Color Shown:
Toasted Brown

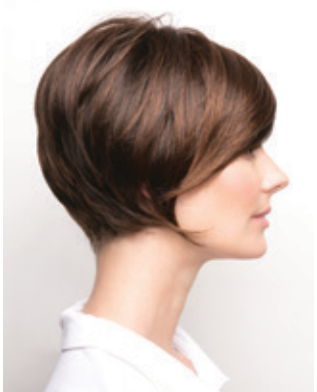
Available Colors:
Brunettes:
Dark Chocolate
Ginger Brown
Marble Brown
Chocolate Frost
Toasted Brown
Maple Sugar

Blonds:
Mochaccino
Honey Wheat
Strawberry Swirl

Spring Honey
Creamy Toffee
Creamy Blond

Hybrant Blonds:
Mochaccino-R
Creamy Toffee-R

Reds:
Auburn Sugar



Cap Construction:
Lace front + monofilament + soft net
Fringe: 5.5" (14 cm)
Crown: 6.25" (16 cm)
Nape: 2.5" (6.4 cm)
Weight: 2.2 oz (62 g)

Color Shown:
Ginger Brown

Available Colors:
Brunettes:
Dark Chocolate
Ginger Brown

Blonds:
Ice Blond

Hybrant Blonds:
Spring Honey-R
Creamy Toffee-R
Mochaccino-R
Rose Gold-R

Grays:
Silver Stone™

AMORE™ COLLECTION

Our standard Amore wig has a double-layer monofilament top construction combined with calibrated machine wefting along the sides and back. All Amore wigs have polyurethane tape tabs along the front and adjustable tabs in the back neck area, to allow for a comfortable fit. The result is a comfortable fit with a natural look that is both fashionable and easy to wear.



BRANDI 2503

Extra long layers cut to frame the face and neck.

Cap Construction:
Double Monofilament
Fringe: 9.25" (23.5 cm)
Crown: 14.5" (37 cm)
Nape: 13.0" (33 cm)
Weight: 5.6 oz (159 g)

Color Shown:
Marble Brown-LR

Available Colors:
Brunettes:
Expresso
Cappucino
Dark Chocolate
Ginger Brown
Marble Brown
Medium Brown
Toasted Brown

LR Brunettes:
Marble Brown-LR

Blonds:
Spring Honey
Gold Blond
Creamy Blond

Hybrant Blonds:
Mochaccino-R
Creamy Toffee-R

Reds:
Chestnut



BRITTANY 2538

Soft, long, and curvaceous layers command attention and define the essence of this glamorous look.

Cap Construction:
Double Monofilament
Fringe: 5.0" (12.5 cm)
Crown: 11.75" (30 cm)
Nape: 15.0" (38 cm)
Weight: 5.0 oz (142 g)

Color Shown:
Toasted Brown

Available Colors:
Brunettes:
Expresso
Cappucino
Dark Chocolate
Coffee Latte
Ginger Brown
Marble Brown
Medium Brown
Toasted Brown
Maple Sugar

Blonds:
Spring Honey
Gold Blond
Creamy Toffee
Creamy Blond

Reds:
Chestnut
Copper Glaze

Hybrant Reds:
Auburn Sugar-R



CASEY

2572

This soft wavy short style can contour many face shapes.



Cap Construction:
Double Monofilament
Fringe: 4.7 - 7.0" (12 - 18 cm)
Crown: 4.7 - 5.1" (12-13 cm)
Nape: 2.6" (7 cm)
Weight: 2.8 oz (78 g)

Colors Shown:
Mochaccino-R

Available Colors:
Brunettes:
Coffee Latte
Deep Smoky Brown
Marble Brown
Toasted Brown
Maple Sugar

Hybrant Brunettes:
Honey Brown-R

Blonds:
Creamy Blond

Hybrant Blonds:
Creamy Toffee-R
Mochaccino-R
Rose Gold-R

Grays:
Silver Stone™
60



CODI

2543

An angled bob with side swept fringe creates a simply beautiful look.



Cap Construction:
Double Monofilament
Fringe: 5.75" (14.5 cm)
Crown: 7.5" (19 cm)
Nape: 1.75" (4.5 cm)
Weight: 3.0 oz (85 g)

Color Shown:
Macadamia-LR

Available Colors:
Brunettes:
Espresso
Cappuccino
Dark Chocolate
Coffee Latte

Almond Rocka
Ginger Brown
Marble Brown
Iced Mocha
Chocolate Frost
Toasted Brown
Maple Sugar

Hybrant Brunettes:
Iced Mocha-R
Maple Sugar-R

Blonds:
Harvest Gold
Mochaccino
Honey Wheat
Strawberry Swirl
Vanilla Lush
Spring Honey
Sugar Cane
Creamy Toffee
Creamy Blond

Hybrant Blonds:
Mochaccino-R
Nutmeg-R
Creamy Toffee-R

LR Blonds:
Macadamia LR

Reds:
Burgundy
Ginger Highlight
Auburn Sugar
Razberry Ice
Chestnut
Irish Spice
Apricot Frost

Hybrant Reds:
Auburn Sugar-R

LR Reds:
Crimson LR

Grays:
Silver Stone™



CONNIE

2535

Chic & Sassy – this incredibly low-maintenance style is ultra-feminine and flirty!

Cap Construction:
Double Monofilament
Fringe: 3.5" (9 cm)
Crown: 4.5" (11.5 cm)
Nape: 2.0" (5 cm)
Weight: 2.0 oz (57 g)

Color Shown:
Harvest Gold

Available Colors:
Brunettes:
Expresso
Dark Chocolate
Ginger Brown
Marble Brown
Medium Brown
Toasted Brown
Light Chocolate

Blonds:
Harvest Gold
Frosti Blond
Strawberry Swirl
Spring Honey
Creamy Blond

Reds:
Ginger Highlight

Grays:
Sandy Silver™
Silver Stone™
Silver Mink
60



DIXIE

2521

Ultra light, short, semi-straight cut that tapers to a smooth nape.

Cap Construction:
Double Monofilament
Fringe: 3.5" (9 cm)
Crown: 3.0" (7.5 cm)
Nape: 2.0" (5 cm)
Weight: 1.9 oz (54 g)

Color Shown:
51

Available Colors:
Brunettes:
Dark Chocolate
Ginger Brown
Marble Brown
Medium Brown
Golden Brown
Light Chocolate

Blonds:
Harvest Gold
Spring Honey

Grays:
Silver Stone™
51
56
Silver Mink

EMY

2576

Daily wear angle bob that's full of style. Volume can be added at crown area to fit a variety of face shapes.



Cap Construction:
Lace front + double monofilament
Fringe: 7.9" (20cm)
Crown: 5.9" (15cm)
Nape: 2.4" (6cm)
Weight: 2.9-3.1oz (83-88g)

Color Shown:
Spring Honey-T (main)
Chocolate Frost (top inset)
Kandy Brown-LR (bottom inset)

Available Colors:
Brunettes:
Dark Chocolate
Chocolate Frost
Coffee Latte
Ginger Brown
Medium Brown

Hybrant Brunettes:
Iced Mocha-R
Marble Brown-R

LR Brunettes:
Kandy Brown-LR

Blonds:
Spring Honey-T

Hybrant Blonds:
Champagne-R
Creamy Toffee-R
Nutmeg-R
Rose Gold-R
Mochaccino-R
Sugar Cane-R

Reds:
Auburn Sugar

Melted:
Melted Marshmallow

Grays:
Silver Stone™
Simply White



ERIKA 2532

A sleek, smooth bob; achieved using razor cuts for a sharper, more distinctive edge.

Cap Construction:
Double Monofilament
Fringe: 4.0" (10 cm)
Crown: 9.5" (24 cm)
Nape: 4.0" (10 cm)
Weight: 3.5 oz (99 g)

Color Shown:
Auburn Sugar

Available Colors:
Brunettes:
Espresso
Cappuccino
Dark Chocolate
Coffee Latte
Ginger Brown
Marble Brown
Medium Brown
Iced Mocha
Toasted Brown
Maple Sugar
Light Chocolate

Blonds:
Harvest Gold
Mochaccino
Honey Wheat
Strawberry Swirl
Vanilla Lush
Spring Honey
Gold Blond
Creamy Toffee
Creamy Blond

Reds:
Auburn Sugar
Irish Spice
Copper Glaze

Grays:
Silver Stone™



ERIN 2513

Transformational bob with beveled fullness throughout nape and sides.

Cap Construction:
Double Monofilament
Fringe: 3.5" (9 cm)
Crown: 8.5" (21.5 cm)
Nape: 2.0" (5 cm)
Weight: 3.1 oz (88 g)

Color Shown:
Light Chocolate

Available Colors:
Brunettes:
Cappuccino
Dark Chocolate
Coffee Latte
Ginger Brown
Marble Brown
Medium Brown
Toasted Brown
Maple Sugar
Light Chocolate

Blonds:
Harvest Gold
Mochaccino
Frosti Blond
Strawberry Swirl
Spring Honey
Gold Blond
Creamy Toffee
Creamy Blond

Reds:
Auburn Sugar
Chestnut

Grays:
Silver Stone™



EVANNA MONO 2568

This popular René of Paris style features salon finish beach wave curls that fall shoulder length. Now in a double monofilament top!

Cap Construction:
Double Monofilament
Fringe: 8"-12" (20-30 cm)
Crown: 8"-12" (20-30 cm)
Nape: 5.5" (14 cm)
Weight: 3.56 oz (100.92 g)

Colors Shown:
Melted Sunset (top)
Dark Chocolate (bottom left, main)

Available Colors:
Brunettes:
Dark Chocolate
Mocha Brown
Ginger Brown

LR Brunettes:
Marble Brown-LR

Blonds:
Ice Blond

Hybrant Blonds:
Spring Honey-R
Rose Gold-R

LR Blonds:
Mochaccino-LR
Creamy Toffee-LR

LR Reds:
Plumberry Jam-LR

Melted Blonds:
Melted Marshmallow





HAYDEN

2573

This versatile medium length layered style creates natural movement



Cap Construction:
Double Monofilament
Fringe: 7.0" (18 cm)
Crown: 9.8 - 11" (25 - 28 cm)
Nape: 9.8" (25 cm)
Weight: 4.4 oz (126 g)

Colors Shown:
Light Chocolate

Available Colors:
Brunettes:
Dark Chocolate
Light Chocolate
Hybrant Brunettes:
Mochaccino-R
Honey Brown-R
Marble Brown-R
Coffee Latte-R

Blonds:
Creamy Blond
Hybrant Blonds:
Rose Gold-R
Spring Honey-R
Creamy Toffee-R
Melted Blends:
Melted Marshmallow



SAMANTHA

2514

Shoulder length, pageboy cut with chiseled ends and side-swept textured fringe.

Cap Construction:
Double Monofilament
Fringe: 7.0" (17.5 cm)
Crown: 10.0" (25 cm)
Nape: 7.0" (17.5 cm)
Weight: 4.2 oz (119 g)

Color Shown:
Dark Chocolate

Available Colors:
Brunettes:
Espresso
Cappuccino
Dark Chocolate
Coffee Latte
Ginger Brown
Marble Brown
Medium Brown
Iced Mocha
Toasted Brown
Maple Sugar

Blonds:
Mochaccino
Spring Honey
Gold Blond
Creamy Toffee
Creamy Blond
Reds:
Auburn Sugar

STEVIE

2516

Long flowing layers evoke a sensuous essence.

Cap Construction:
Double Monofilament
Fringe: 4.0" (10 cm)
Crown: 17.0" (43 cm)
Nape: 18.0" (45.5 cm)
Weight: 5.2 oz (147 g)

Color Shown:
Honey Wheat

Available Colors:
Brunettes:
Espresso
Cappuccino
Dark Chocolate
Coffee Latte
Ginger Brown
Marble Brown
Medium Brown
Chocolate Frost
Toasted Brown

Blonds:
Mochaccino
Honey Wheat
Strawberry Swirl
Vanilla Lush
Spring Honey
Gold Blond
Sugar Cane
Creamy Toffee
Creamy Blond

Reds:
Burgundy Rosa
Auburn Sugar



TATUM

2548

Fashion-forward straight look with center part and blunt fringe.

Cap Construction:
Double Monofilament
Fringe: 3.5" (9 cm)
Crown: 13.0" (33 cm)
Nape: 6.5" (16.5 cm)
Weight: 3.7 oz (104 g)

Color Shown:
Chocolate Frost

Available Colors:
Brunettes:
Espresso
Cappucino
Dark Chocolate
Coffee Latte
Ginger Brown
Marble Brown
Iced Mocha
Chocolate Frost
Toasted Brown
Maple Sugar

Blonds:
Harvest Gold
Mochaccino
Strawberry Swirl
Spring Honey
Sugar Cane
Creamy Toffee
Creamy Blond

Reds:
Auburn Sugar
Irish Spice
Copper Glaze
Apricot Frost



TOVA

2540

This highly flattering cropped pixie gives you texture and style.

Cap Construction:
Double Monofilament
Fringe: 4.0" (10 cm)
Crown: 3.0" (7.5 cm)
Nape: 2.25" (5.5 cm)
Weight: 2.0 oz (57 g)

Color Shown:
Marble Brown

Available Colors:
Brunettes:
Dark Chocolate
Coffee Latte
Ginger Brown
Marble Brown
Toasted Brown
Maple Sugar

Blonds:
Harvest Gold
Mochaccino
Strawberry Swirl
Spring Honey
Sugar Cane
Creamy Toffee

Reds:
Auburn Sugar
Copper Glaze
Apricot Frost

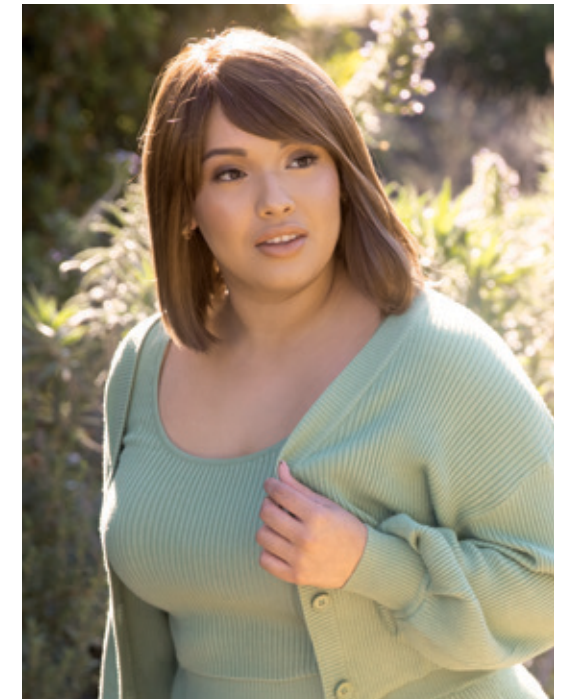
Grays:
Silver Stone™



VADA

2569

Sleek bob featuring a natural side swept fringe.



Cap Construction:
Lace front
+ Double Monofilament
Fringe: 4.72" (12 cm)
Crown: 11.02" (28 cm)
Nape: 3.93" (10 cm)
Weight: 4.12 oz (117 g)

Colors Shown:
Honey Brown-R

Available Colors:
Brunettes:
Dark Chocolate
Ginger Brown
Toasted Brown

Hybrant Brunettes:
Marble Brown-R
Maple Sugar-R

Blonds:
Creamy Blond

Hybrant Blonds:
Mochaccino-R
Spring Honey-R
Creamy Toffee-R
Sugar Cane-R

Melted Blends:
Melted Marshmallow

Reds:
Mulberry Brown
Auburn Sugar-R

Pastels:
Bubblegum-R

Grays:
Silverstone™

Hybrant Grays:
Smoky Gray-R

HALO COLLECTION

Comfy, light and stylish Halos were designed to be worn under a hat, scarf or wrap. A detachable fringe gives you a choice to change up your look to complement any outfit. A great alternative to a full wig.

LONG HALO 737

Our popular long style is now available in Halo! Use it as a regular Halo or as an alternative way to change your look for a day.



Circumference: 53.5 cm



Overall: 21.5" (55cm)
Weight: 3.7oz (104g)

Detachable bangs
Hat not included

Color Shown:
Honey Brown

Available Colors:
Brunettes:
Cappucino
Dark Chocolate
Ginger Brown
Maple Sugar
Marble Brown
Toasted Brown

Hybrant Brunettes:
Honey Brown
Marble Brown-R

Blonds:
Creamy Blond
Creamy Toffee
Mochaccino
Spring Honey



WAVY BOB HALO 738

This soft wave bob compliments your face and neck line with a stylish look.



Circumference: 53.5 cm



Overall: 11" (28 cm)
Weight: 2.5 oz (72 g)

Detachable bangs
Turban not included

Turban shown:
2135 Anna Tube
553-Vintage Khaki

Color Shown:
Ginger Brown

Available Colors:
Brunettes:
Cappucino
Dark Chocolate

Ginger Brown
Maple Sugar
Marble Brown
Toasted Brown

Hybrant Brunettes:
Honey Brown

Blonds:
Creamy Blond
Creamy Toffee
Mochaccino
Spring Honey



HALO BOB

736

Chin-length layered bob with side swept detachable fringe

Overall: 10.0" (24.4 cm)
Weight: 2.9 oz (82 g)

Detachable bangs
Turban not included

Turban shown:
2102 Lotus Printed
542-Indian Mood

Color Shown:
Creamy Blond

Available Colors:

Brunettes:
Cappuccino
Dark Chocolate
Coffee Latte
Ginger Brown
Marble Brown
Toasted Brown
Maple Sugar

Blonds:
Mochaccino
Spring Honey
Creamy Toffee
Creamy Blond

Reds:
Coconut Spice



ROP HALO

733

Straight, shoulder length bob covers the face and neck line with natural movement.

Overall: 14.0" (35.5 cm)
Weight: 2.9 oz (82 g)

Turban Not Included

Turban shown:
2135 Anna Tube
554-Legion blue

Color Shown:
Toasted Brown

Available Colors:

Brunettes:
Cappuccino
Dark Chocolate
Ginger Brown
Marble Brown
Toasted Brown
Maple Sugar

Blonds:
Mochaccino
Spring Honey
Creamy Toffee



REMY HUMAN HAIR TOPPERS

Introducing our newest additions of remy human hair toppers. These pieces are made with the highest quality human hair. With their unique bases, you can find exactly what you're looking for to achieve your desired look.



DIAMOND TOPPER

8706

A quality human hair enhancer with a finely shaped base constructed to fit perfectly secure while adding density.

Front length: 5.0" (12.7 cm)
Side length: 12" (30.5 cm)
Weight: 1.1 - 1.3 oz (32-36 g)

Color Shown:
Dark Chocolate

Available Colors:

Brunettes:
Brown Spice
Cappuccino
Dark Chocolate
Honey Brown
Toffee Brown

Blonds:
Moonlight Blond-LR
Starlight Blonde





MINI TOPPER

8707

A uniquely crafted topper designed to fit anywhere on your head.

Front Length: 4.5" (11.4 cm)
Side Length: 6.0" (15.2 cm)
Weight: 0.4 - 0.5 oz (11-13 g)

Color Shown:
Honey Brown

Available Colors:

Brunettes:
Brown Spice
Cappuccino
Dark Chocolate
Espresso
Honey Brown

Blonds:
Moonlight Blonde Root
Starlight Blonde
Toffee Brown



HAIR ENHANCEMENT

Boost your confidence and look your best. Our quality hair enhancements are designed to create instant transformation that will make you shine.

Light, breathable base constructions matched with touchable hair in a variety of beautifully rich colors provide the ultimate versatility and comfort.

FLEX TP

912

This topper is a simple way to add density and coverage! Our TP features a Monofilament base including our soft wire perimeter technology for the perfect fit.

Fringe: 12.99-14.17" (33-36 cm)
Top: 16.14" (41 cm)
Weight: 1.19 oz (34 g)

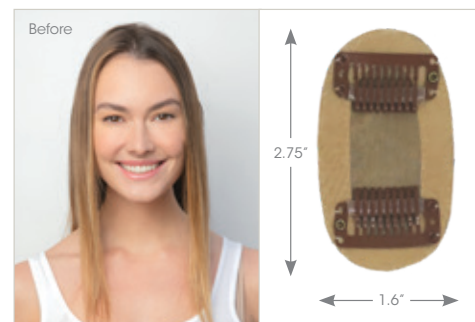
Colors Shown:
Ginger Brown

Available Colors:
Brunettes:
Espresso
Cappuccino
Dark Chocolate
Ginger Brown
Toasted Brown
Medium Brown
Marble Brown

Hybrant Brunettes:
Honey Brown-R

Blonds:
Mochaccino
Creamy Blond
Creamy Toffee
Spring Honey

Grays:
Silverstone™





LUXE TP 911

This topper increases volume and is a gorgeous enhancement to your everyday look. Our TP features a Monofilament base+ lace front including soft wire perimeter technology for a perfect fit.



Fringe: 9.44" (24 cm)
Top: 16.53" (42 cm)
Weight: 2.22 oz (63 g)

Color Shown:
Spring Honey-R

Available Colors:
Brunettes:
Espresso
Cappuccino
Dark Chocolate
Ginger Brown
Medium Brown

Hybrant Brunettes:
Honey Brown-R
Marble Brown-R

Blonds:
Gold Blond
Creamy Blond

Hybrant Blonds:
Mochaccino-R
Spring Honey-R
Creamy Toffee-R
Sugar Cane-R

Grays:
Silverstone™



LONG TP MONO 752

This topper can be worn as a highlighter or filler, and covers the top of the head from fringe to crown.

Hair Length: 18.0"
(45.5 cm)
Weight: 2.5 oz (71 g)

Color Shown:
Marble Brown

Available Colors:
Brunettes:
Espresso
Cappuccino
Dark Chocolate
Ginger Brown
Kahlua Blast
Marble Brown
Medium Brown
Light Chocolate

LR Brunettes:
Marble Brown-LR
Blonds:
Harvest Gold
Vanilla Lush
Spring Honey
Gold Blond

Hybrant Blonds:
Mochaccino-R
Nutmeg-R/F
Creamy Toffee-R
Spring Honey-R



FRINGE FLAIR 759

Update your hairstyle with our sweeping asymmetrical fringe without cutting your hair.

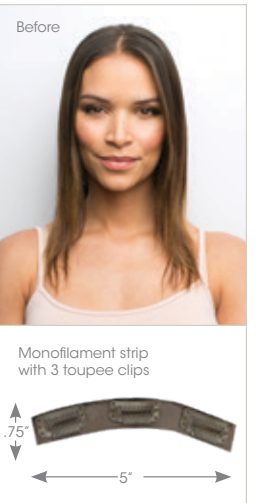
Fringe: 4.5" (11.5 cm)
Crown: 8.0" (20.5 cm)
Weight: 0.4 oz (10 g)

Color Shown:
Dark Chocolate

Available Colors:
Brunettes:
Espresso
Cappuccino
Dark Chocolate

Ginger Brown
Marble Brown
Medium Brown
Toasted Brown
Light Chocolate

Blonds:
Harvest Gold
Spring Honey
Gold Blond



MEDIUM TP MONO 751

This topper can be worn as a highlighter or filler, and covers the top of the head from fringe to crown.

Hair Length: 8.0" (20.5 cm)
Weight: 1.6 oz (45 g)

Color Shown:
Marble Brown

Available Colors:
Brunettes:
Dark Chocolate
Ginger Brown
Marble Brown
Medium Brown
Light Chocolate

Hybrant Brunettes:
Marble Brown-R

Blonds:
Harvest Gold
Vanilla Lush
Spring Honey
Gold Blond

Hybrant Blonds:
Creamy Toffee-R
Mochaccino-R



AMORE™ CHILDREN'S COLLECTION

Our children's lace front with lace cap wigs are light weight, comfortable, wefted and with an invisible hairline for ultimate comfort.

MILEY & LOGAN

Lace front, with full mono top covered by soft material

Light and breathable net top

Elastic lace allows cap to stretch for more flexibility



ELSIE, ADDISON & KENSLEY

Lace front with lace part cap

Light and breathable net top

Elastic lace allows cap to stretch for more flexibility



ADDISON 4208

Unisex style with tapered nape and natural body.



Cap Construction:
Lace Front + Lace Part
Fringe: 2.36" (6 cm)
Crown: 4.72" (12 cm)
Nape: 1.96" (5 cm)
Weight: 1.69 oz (48 g)

Colors Shown:
Sugar Cane (main)
Creamy Toffee (inset)

Available Colors:
Brunettes:
Cappuccino
Medium Brown
Light Chocolate
Golden Brown

Blonds:
Mochaccino
Creamy Toffee
Spring Honey
Sugar Cane
Creamy Blond

Reds:
Dark Rust

Pastels:
Bubblegum-R
Seaglass-R

ELSIE 4209

Playful bob with a light wispy bang

Cap Construction:
Lace front/part
Fringe: 3.3" (8.5 cm)
Crown: 10.2" (26 cm)
Nape: 3.1" (8 cm)
Weight: 2.4 - 2.6 oz (70 - 76 g)

Colors Shown:
Seaglass-R (main)
Mochaccino (inset)

Available Colors:
Brunettes:
Cappuccino
Medium Brown
Light Chocolate
Golden Brown

Blonds:
Mochaccino
Creamy Toffee
Spring Honey
Sugar Cane
Creamy Blond

Reds:
Dark Rust

Pastels:
Bubblegum-R
Lavender Blush-R
Seaglass-R



KENSLEY 4207

A-line bob with side swept fringe for versatility.

Cap Construction:
Lace Front + Lace Part
Fringe: 4.72" (12 cm)
Crown: 7.48" (19 cm)
Nape: 1.96" (5 cm)
Weight: 2.18 oz (62 g)

Colors Shown:
Lavender Blush-R

Available Colors:
Brunettes:
Cappuccino
Medium Brown
Light Chocolate
Golden Brown

Blonds:
Mochaccino
Creamy Toffee
Spring Honey
Sugar Cane
Creamy Blond

Reds:
Dark Rust

Pastels:
Bubblegum-R
Lavender Blush-R
Seaglass-R





LOGAN

4205

Unisex style with tapered nape and natural body.

Extended lace covered by soft net material

Cap Construction:
Lace front + Monofilament
Fringe: 5.0" (12.5 cm)
Crown: 5.0" (12.5 cm)
Nape: 2.0" (5 cm)
Weight: 2.2 oz (62 g)

Color Shown:
Medium Brown

Available Colors:
Brunettes:
Cappucino
Medium Brown
Golden Brown

Blonds:
Spring Honey
Gold Blond
Creamy Blond



MILEY

4206

Soft side swept fringe and sweet shoulder length locks.

Extended lace covered by soft net material

Cap Construction:
Lace front + Monofilament
Fringe: 4.5" (11.5 cm)
Crown: 14.5" (37 cm)
Nape: 8.25" (21 cm)
Weight: 3.9 oz (110 g)

Color Shown:
Bubblegum-R

Available Colors:
Brunettes:
Cappucino
Medium Brown
Golden Brown

Blonds:
Spring Honey
Gold Blond
Creamy Blond

Pastels:
Lavender Blush-R
Seaglass-R
Bubblegum-R



ACCESSORIES



Asana Scarf | Color Shown: Brown Melange



Zoya V Turban | Color Shown: Grey Melange

Christine
HEADWEAR

Aderans Hair Goods is now the sole USA distributor of Christine Headwear™ turbans and scarves!

A light collection made in the best possible quality.

Contact Your Sales Consultant
800.353.7363



Laura Turban | Color Shown: Legion Blue

ACCESSORIES (CONTINUED)



8123
21" MANNEQUIN



8119
17" MANNEQUIN



9580
WIG CAP
Available Colors:
Beige, Black,
and Brown



9581
WIG LINER
OPEN MESH
Available Colors:
Beige, Black,
and Brown



8113 MANNEQUIN
HOOK



9587
ROP WIG LIFT COMB



8128
18" WHITE
MANNEQUIN



8129
18" GRAY
MANNEQUIN
with logo



8130
18" BLACK
MANNEQUIN
with logo



8131
18" WHITE
MANNEQUIN
with logo



9561
RENE OF PARIS FLAT IRON



9591
ROP FOLDING BRUSH



965
WIRE BRUSH

9582
WIG STAND
PACKAGE

3pc package
contains colors:
Black, Blue & Gray

Sold separately:
9583
Black, Blue, Gray



Convenient "snap together" stand for wig storage or service.

9511
SWATCHES

The color
swatches let you
see your perfect
hair match.



9514
AMORE™ HUMAN HAIR* SWATCHES

RENÉ of PARIS™
MAINTENANCE TOOLS

Rene of Paris Prepare Shampoo

This luxurious shampoo is formulated with the ultimate in moisture replenishing cleansers. Rene of Paris Prepare Shampoo helps maintain the smoothness, strength and polish of your wig/hairpiece.

The gentle combination of plant and vegetable extracts, along with natural essential oils and vitamins, provides a gentle but thorough cleansing of your wig/hairpiece. The results will revolutionize how you feel.

Rene of Paris Light Conditioner

Rene of Paris Conditioner for synthetic wigs revitalizes dull hair leaving it softer, shinier and easy to manage.

Rene of Paris Revive Liquid Enhancement

The finest advanced liquid developed for synthetic fiber hair. Rene of Paris Revive Liquid Enhancement will revive your wig/hairpiece and give it the brand new feel.

Not only helps eliminate frizz while adding luster, texture and volume, but also protects your wig/hairpiece from the daily stresses.

Rene of Paris Protect Holding Spray

The final stop in maintaining and styling your wig/hairpiece. This holding spray adds shine while gently, yet firmly, holding your desired style.



ROP Prepare
Shampoo
9950 | 8 oz.
9954 | 2 oz.

ROP Light
Conditioner
9953 | 8 oz.
9955 | 2 oz.

ROP Protect
Holding Spray
9952 | 8 oz.
9956 | 2 oz.

ROP Revive
Liquid
Enhancement
9951 | 8 oz.

We are delighted that you have chosen to become one of our valued customers. We appreciate your business as well as any inquiries regarding the following:

APPLICABILITY:

1. The following terms and conditions ("Terms") are the only terms which govern the sale of the goods ("Goods") by Aderans Hair Goods, Inc. ("AHG") to its customers (each referred to hereafter as "Buyer" or "You"). Notwithstanding anything herein to the contrary, if a written contract signed by both parties is in existence covering the sale of the Goods covered hereby, the terms and conditions of said contract shall prevail to the extent they are inconsistent with these Terms.

2. These Terms, together with the applicable invoice and the Statement of Policy defined below (collectively, this "Agreement"), comprise the entire agreement between the parties, and supersede all prior or contemporaneous understandings, agreements, negotiations, representations and warranties, and communications, both written and oral. These Terms prevail over any of Buyer's general terms and conditions of purchase regardless of when Buyer has submitted its purchase order or such terms. Acceptance of Buyer's purchase order or fulfillment of Buyer's order does not constitute acceptance of any of Buyer's terms and conditions and does not serve to modify or amend these Terms.

ACCEPTANCE OF PURCHASE ORDER. AHG has the right, in its sole discretion, to accept or reject any purchase order issued by You. AHG may accept any purchase order by confirming the order (whether by written confirmation, invoice or otherwise) or by delivering the Goods, whichever occurs first. No purchase order is binding on AHG unless accepted by AHG.

PRICES. You shall purchase the Goods from AHG at the prices set forth in AHG's price list in effect at the time that AHG accepts Your purchase order ("Prices"). Prices are exclusive of, and You are solely responsible for, and shall pay, any and all taxes, with respect to, or measured by, the manufacture, sale, shipment, use or Price of the Goods; provided, however, that You shall not be responsible for any taxes imposed on, or with respect to, AHG's income, revenues, gross receipts, personnel or real or personal property or other assets.

PAYMENT TERMS: AHG accepts payment by Visa, MasterCard, AMEX, Discover, money order, wire transfer and COD. Upon approval, credit terms may be available.

CREDIT PURCHASES: If You wish to apply for an AHG 30-day open account (NET-30), contact Your AHG sales representative and request a credit application.

SHIPPING/HANDLING: You will pay for all shipping charges and insurance costs. AHG offers shipping via UPS next day air, 2-3 day air, and ground. There is a handling charge of \$1.00 for all orders. For each purchase order accepted by AHG, AHG may, in its sole discretion, without liability or penalty, make partial shipments of Goods to You. Each shipment will constitute a separate sale and You will pay for the units shipped whether such shipment is in whole or partial fulfillment of a purchase order.

TRANSFER OF TITLE & RISK OF LOSS: Title passes to You upon delivery of the Goods to the address You specified in the purchase order. Risk of loss or damage to the Goods passes

to You upon AHG's tender of such units to the carrier at AHG's location in Chatsworth, CA.

STATEMENT OF POLICY: You must comply with the Statement of Policy and Guidelines for Using Aderans Trademarks and Copyrights (the "Statement of Policy") which was provided to You and which may be modified or updated by AHG from time to time in its sole discretion.

RETURN POLICY: Returns will not be accepted unless pre-authorized by (AHG). Requests must be made within 30 days from receipt of Goods. Upon approval and receipt of the authorization for return label, Goods meeting the following conditions may be returned for an exchange or direct credit to Your account (freight prepaid by Buyer). NO cash refunds! If an item is to be exchanged, new shipping and handling charges will be added.

1. A copy of Your invoice must accompany all returns. The authorization for return label must be placed on the outside of the box (complete with the authorization number) and Your return address. If not, the box will be refused.

2. Returned Goods must be in MINT CONDITION. Mint condition is defined by AHG as: no missing tags or labels, the hair net is not removed, item(s) are not combed/fluffed or tried on by a customer. All returns must be in original shipping box. There is a restocking fee of \$10.00 for EACH piece returned.

3. AHG has carefully designed its product packaging to protect the product integrity. AHG is not responsible for damage to or problems with any product where the product and/or shipment packaging has been changed per Your request. No returns will be accepted under these conditions.

4. Shipping and handling fees are non-refundable.

5. Any DISCONTINUED items are not returnable.

6. AHG is not responsible for lost return packages.

It is recommended that You keep proper Proof-of-Delivery. Goods not meeting the above stipulations will be refused. AHG will not accept returns more than 30 days after receipt of Goods. If there is a factory defect or an incorrectly shipped item due to our error, a full exchange or credit will be applied directly to Your account. Note: If an item is returned for a "defective" credit and upon examination found not to be defective, credit will only be given for the item's original price (providing it still meets the above standards), and a \$10.00 restocking charge will be applied. Any additional product not authorized for return will be sent back.

NOTE: Colors shown in this catalog may not reflect actual color of product. RENÉ OF PARIS is a trademark or registered trademark of Aderans Hair Goods, Inc. and/or Aderans Co., Ltd. in the United States and other countries.

CHRISTINE HEADWEAR and the Christine Headwear logo are trademarks and/or registered trademarks of The Headwear Company in the United States and other countries.





DISTRIBUTED BY

Aderans
HAIR GOODS

9135 Independence Ave.
Chatsworth, CA 91311 USA
Toll Free: 800.353.7363
Fax: 818.885.0134

Front Cover: Braylen in Ice Blond
Back Cover: Sybil in Marble Brown

www.reneofparis.com

FOLLOW US ON:



AMORE CATALOG 2022 COLLECTION



2111040